

Multifunction Colour

RICOH MP C4504 MP C6004

✓ Copier ✓ Printer ✓ Facsimile ✓ Scanner

RICOH
imagine. change.



MP C4504

45
ppm
monochrome
& full-colour

MP C6004

60
ppm
monochrome
& full-colour

Improve productivity in your own way

You take your work personally. Why not use it to your advantage? Use what you know about your everyday tasks to customise digital workflows on the RICOH® MP C4504/MP C6004 Colour Multifunction Printer (MFP) with our Workstyle Innovation Technology. Choose from multiple user interfaces for intuitive fingertip control on an oversized 10.1"-wide Super VGA Smart Operation Panel. Create one-touch shortcuts to automate manual tasks. Place your own information-rich widgets on the control panel and check settings and critical details with a single glance. Produce more types of jobs in more formats — including brilliant colour prints on a wide range of paper stocks — with speed and convenience without compromising security or wasting resources. Add user authentication to protect information and to encourage more responsible printing. And take advantage of mobile technologies to remain productive from anywhere.

- Print up to 60 colour prints/copies per minute
- Use flick, pinch and swipe motions to navigate an interactive user interface
- Customise your own automated workflows to reduce manual tasks
- Use your personal mobile device to print and share information anywhere
- Showcase your work in brilliant colours with professional finishing
- Take advantage of eco-friendly features to lower operating costs and reduce overall environmental impact without sacrificing business productivity



Do it all with speed and convenience

Perform more tasks with fewer hassles

Expedite every task, every day

Decisions have to be made. You might as well ensure they're the right ones by getting information where it needs to be — on time. A built-in motion sensor activates the Smart Operation Panel as you approach, so you can begin working the moment you arrive at the MFP. Print up to 60 pages per minute for incredibly fast turnarounds, even when producing full-colour brochures, presentations, spreadsheets and more. Add optional paper trays to extend paper capacity up to 4,700 sheets, and remove paper jams quickly via an animated guide to keep jobs moving. Scan full-colour originals and deliver them at breakneck speeds with a host of scan-to capabilities, including access to your LDAP directory for email delivery. Send and receive paperless faxes to ensure contracts, forms and other important documents arrive at the right destination at the right time.



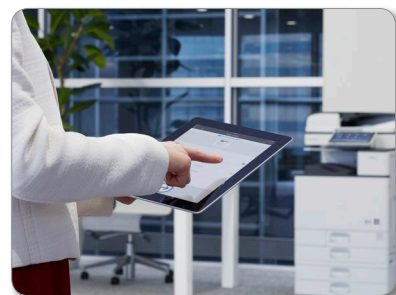
Leave your mark with brilliant colours

Make an unforgettable impression by producing compelling images and documents with densely rich colours for more lifelike reproductions at up to 1200 dpi resolution. The RICOH MP C4504/MP C6004 recalibrates itself as it processes files, which means colours never deteriorate and text and lines stay incredibly sharp page after page. Expand your reach by printing on a wider, thicker range of paper stocks — up to SRA3 sizes and 300 gsm. You can even create banners up to 1,260 mm long or create posters by printing one page across several sheets to then put them together, both features saving you on outsourcing costs. Want to save even further on outsourcing? Choose the new Fiery® E-23C Colour Controller and produce spot colour professional output using the gamut of RGB, CMYK and PANTONE® colours.



Make your mark from anywhere

With your smartphone or tablet in hand, productivity remains within your grasp. Download the RICOH Smart Device Connector app to connect to the MP C4504/MP C6004 without software, utilities, drivers or delays. Simply touch your mobile device to the MFP's Near Field Communication (NFC) tag to print, scan and share documents, photos and more instantly. Send information to your phone just as easily. Scan originals at the device, deliver them to your smartphone and tablet and take them with you or save them to the cloud with Dropbox and Google Drive shortcuts within the app. Use your personal address book to bypass manual entry tasks and send emails to any recipient in a single action. Plus, you can use the dual optional network port to connect to two networks simultaneously.





A new way to work is within your reach

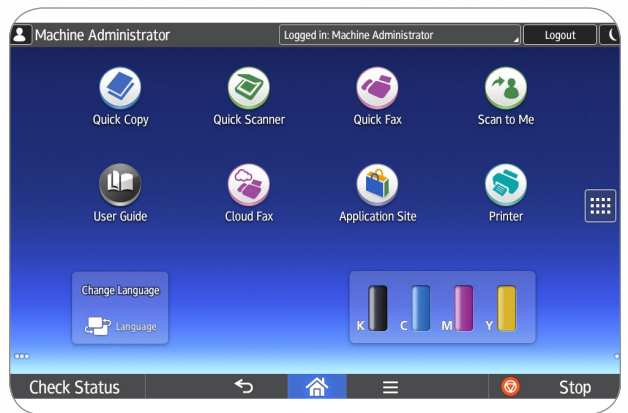
Slide from one job to the next with ease

Searching for ways to be more productive? Look right in front of you, it's at your fingertips with our revolutionary Workstyle Innovation Technology. Use the same motions you use on your smartphone or tablet — including swipe scrolling, drag-and-drop and pinch-and-flick gestures — to toggle between jobs and check settings quickly. Take advantage of the dynamic user interface layout on the oversized 10.1"-wide Super VGA Smart Operation Panel to access information instantly. Because there are no hard keys, you simply tap icons to navigate from one task to the next. The user interface even lets you print, scan, copy and fax using convenient one-touch controls. Don't worry, we didn't forget about what's worked in the past. You can opt to use a touchscreen version of the legacy user interface found on previous Ricoh devices.



Use intuition to work smarter

Decisions are easier when you have the right information. Workstyle Innovation Technology lets you access information at any time. Choose to use the "smart apps" user interface so you can access details quickly and intuitively with a single glance. Click on your choice of iconic apps to automate everyday print, copy, scan and fax workflows and reduce time-consuming manual entry that can derail even your best ideas. Check any setting — from the number of prints to scan-to-destinations to finishing options — with a tap of your finger. Need to make changes to settings or workflows? Touch the interactive Smart Operation Panel again to make adjustments in only moments. Looking for more features and functions? Download additional apps from our Application Site and place them as one-touch widgets on the Home Screen.



Customise workflows to simplify information flow

You have a lot of work to do. Who says you have to spend a lot of time doing it? Simplify your workday and deploy workflow applications that streamline business via Ricoh Workstyle Innovation Technology and use what you know about everyday tasks to create unique, customised solutions powered by the Smart Operation Panel. Do you routinely print the same types of spreadsheets? Do you scan and share notes after the weekly meeting? Integrate multiple processes and simplify complex tasks, so you can simply press an icon and complete these tasks faster without repeating steps or recreating the work. You can use the interactive user interface as a one-touch path for special tasks, too. Tap the ID Card Copy icon to scan two-sided identity documents, such as licences and insurance cards, onto a single-sided document. For more complex workflows, add your choice of plug-and-play workflow software to simplify your workday.



Empower users to work quickly, collectively

Grab and share information automatically

Move information to the right people in the right format quickly. Access up to 3,000 frequently-used documents stored in the Document Server. Use the built-in browser to capture files and images in the Cloud without servers, system integration and software updates. With optional Optical Character Recognition (OCR) software, you can place keyword-searchable metadata on that information for easier retrieval. Ready to share with others? Scan originals at up to 180 ipm via the 220-Sheet Single Pass Document Feeder and use scan-to capabilities to send digital files to any recipient, anywhere. Or, use Ricoh Device Software Manager to automate print driver installation and begin using the device in moments. You can also track everything in real time with web-enabled tools.



Hold yourself and others accountable

You're responsible for getting company information to the right people. So make certain the right people are sending it. With user authentication, you can track activity for every user, set print quotas, restrict access to specific functions and more. Each user logs in to the MP C4504/MP C6004 by entering a passcode or billing code — or by passing an ID card over an optional NFC card reader at the device. With Locked Print, users can release jobs for printing only when standing at the MFP, which reduces unnecessary printing and helps protect confidential information. You can also place a watermark on specific printed documents if unauthorised users try to recreate them. Take advantage of encryption protection and automatic overwrites to prevent access to information residing on the hard drive.



Plan to save

The MP C4504/MP C6004 is designed specifically to simplify workloads while reducing expenses. Because the MFP meets EPEAT® Gold criteria* and ENERGY STAR® certifications, you can realise incredibly low Typical Electricity Consumption (TEC) rates — as low as 1.8 kWh/week. Use duplex printing as the default to reduce paper costs. Program the MFP to power down automatically when you know the office will be empty. And use the Eco-Friendly widget to send users hints and tips for conserving energy. You can even track how much energy you're saving. The system is also equipped with an innovative motion sensor, which senses an approaching user by detecting the differences in body temperature versus the surrounding environment. The system will awake from Sleep Mode and turn on the operation panel within one second so it is ready to begin job programming by the time the user arrives at the machine.



*EPEAT Gold rating is applicable only in the USA.

To view detailed features of our multifunction products online go to www.ricoh.com.au/products

Perform more jobs with fewer hassles



- 1 Smart Operation Panel:** Choose from multiple intuitive user interfaces to customise and automate workflows on the 10.1"-wide Super VGA Smart Operation Panel. Create iconic shortcuts. Add convenient widgets. And access information with one-touch control using the same motions you use on your smartphone or tablet.
- 2 220-Sheet Single Pass Document Feeder (SPDF):** Feed colour and black-and-white documents with high-speed copying and scanning in a single pass.
- 3 User authentication:** Monitor the activity for every MFP user with personal passcodes or billing codes. Or, with embedded Near Field Communication (NFC) technology and an optional NFC Card Reader, you can require users to gain access via proximity card.
- 4 Paper Trays (Standard):** With two 550-Sheet Paper Trays, one of which can accommodate paper sizes up to SRA3 you can produce more jobs with fewer reloads.
- 5 100-Sheet Bypass Tray:** Accommodate a wider range of paper stocks — from envelopes to 320 x 1,260 mm banner sizes — to impress audiences with versatile output. Add an optional Banner Paper Guide Tray for convenient, affordable banner printing.
- 6 Document Server:** Create up to 200 shared or passcode-protected personal folders to store up to 3,000 frequently used digital documents on the MFP's hard drive.
- 7 Tandem Large Capacity Trays (Optional):** Extend runs for A4 paper sizes with two 1,000-Sheet Paper Trays.
- 8 1,500-Sheet Side Large Capacity Tray (Optional):** Minimise interruptions by adding up to an additional 1,500 sheets of A4 paper.
- 9 125-Sheet One Bin Tray (Optional):** Separate output quickly for easier retrieval when printing multiple jobs.
- 10 2,000-Sheet External Booklet Finisher (Optional):** Produce up to 20-sheet saddle-stitched booklets. Available with an optional Hole Punch Unit.
- 11 Dual Network Support (Optional):** Connect to multiple networks simultaneously via the additional network interface port.
- 12 Web Browser:** Use the built-in web browser on the MFP touch panel to search for web pages.
- 13 Motion Sensor:** Senses approaching users and awakens the MFP from Sleep Mode so it is ready by the time the user arrives at the machine.

Put it all together at the end

Bring your best ideas together by finishing them in style. With the External Hybrid Stapleless + Stapler Finisher, you can conserve resources by getting rid of staples entirely for document sets of 2 to 5 sheets (which are 4 to 10 pages in duplex printing). For document sets from 6 to 50 sheets, the finisher can automatically convert to staples. It is ideal for educational, manufacturing and healthcare environments.

You can choose other finishing options, too. Each is specifically designed to simplify paper handling, stacking and stapling, so you can concentrate on other core tasks. Choose the one that meets your unique requirements and give your projects an affordable, impressive professional-grade look.



Finisher	Paper Capacity (A4)	Hole-Punch	Saddle Stitch	Stapleless
SR3130 Internal	500 Sheets	Option	N/A	N/A
SR3210 External	1,000 Sheets	Option	N/A	Stapleless – Up to 5 Sheets Stapled – Up to 50 Sheets A4
SR3220 External	1,000 Sheets	Option	Up to 15 Sheets	N/A
SR3240 External	2,000 Sheets	Option	Up to 20 Sheets	N/A
SR3230 External	3,000 Sheets	Option	N/A	N/A

*Not available for MP C6004

General Specifications

Configuration	Desktop
Printing Process	4-Drum Method
Output Speed (Copy/Print)	MP C4504: 45-ppm B&W & FC (A4) MP C6004: 60-ppm B&W & FC (A4)
Warm-Up Time	24 seconds
Recovery from Sleep Mode	Approximately 1.0 second (motion-sensor activated)
First Copy Time (FC/B&W)	MP C4504: 5.7/4.0 seconds MP C6004: 4.5/3.1 seconds
Copy Resolution	600 dpi
Quantity Indicator	Up to 999 copies
Single Pass Document Feeder (SPDF)	Original Capacity: 220 sheets Original Size: A5 – A3 Paper Weights: Simplex: 40 – 128 g/m ² , Duplex: 52 – 128 g/m ²
Paper Capacity	Standard: 2 x 550 sheets + 100-Sheet Bypass Tray, Maximum: 4,700 sheets (w/Tandem LCT + Side LCT)
Supported Paper Sizes	1st Paper Tray: A4 2nd Paper Tray: A6 – SRA3, Envelopes Bypass: Up to SRA3, Envelopes Custom Sizes: Width: 90 – 320 mm, Length: 148 – 1260 mm
Supported Paper Weights	Standard Trays: 60 – 300 g/m ² Bypass Tray: 52 – 300 g/m ² Duplex Unit: 52 – 256 g/m ²
Paper Types	Plain, Recycled, Special Paper 1 – 3, Letterhead, Cardstock, Preprinted Paper, Bond Paper, High-Gloss Coated Paper, Color Paper, Envelopes, Coated, Labels* & OHP*
Auto Duplex	Standard
Output Capacity	Standard: 500 sheets Maximum: 3,625 sheets
Zoom	25% – 400% in 1% increments

Dimensions (WxDxH)	668 x 738 x 1205 mm (Includes SPDF and Two-Tray Paper Bank)
Weight	103.4 kg (Machine + SPDF)
Power Requirements	220-240V 50/60Hz
Power Consumption	1,850W or less; Sleep Mode: .89W
TEC Value**	MP C4504: 1.8 kWh MP C6004: 2.7 kWh
*Bypass Tray Only	
**Typical Electricity Consumption by ENERGY STAR Qualified Imaging Equipment Test Procedure	
Printer Specifications (Standard)	
CPU	Intel Atom Processor Bay Trail 1.75 GHz
Memory/HDD	2 GB RAM/320GB HDD Standard & 4GB RAM/320GB HDD Option
Page Description Languages	Standard: PCL5c, PCL6, PDF Optional: Adobe® PostScript®3, XPS, IPDS & PictBridge
Font Support	Standard: PCL: 45 Scalable fonts + International 13 fonts Optional: PostScript 3: 136 Roman fonts; IPDS: 108 Roman fonts 1200 x 1200 dpi
Max. Print Resolution	Standard: 1000Base-T/100Base-TX/10Base-T Ethernet, USB2.0 Type A (3 Ports), SD Slot on Operation Panel
Network Interfaces	Option: IEEE1284/ECP; IEEE802.11a/b/g/n; USB2.0 Type B
Network Protocol Support	TCPIP (IPv4, IPv6)
Network/OS	Windows Vista/7/8.1/10/Server 2008/Server 2008R2/ Server2012/ Server 2012R2 Unix; Sun Solaris, HP-UX, SCO OpenServer, RedHat Linux, IBM AIX, Citrix Presentation Server 4.5, XenApp 5.0 Mac OS X v.10.7 or later, SAP R/3, IBM iSeries AS/400-using OS/400
Utilities	Host Print Transform Device Manager NX, Web Image Monitor, @Remote

Document Server Specifications (Standard)

Max. Stored Documents	3,000
Max. Pages/Document	2,000
Max. Page Capacity	9,000
Max. Number of Folders	200

Scanner Specifications (Standard)

Scanner Resolution	B&W and FC scanning at 100 – 600 dpi, Up to 1200 dpi for TWAIN scanning
Scanning Speed (B&W & Colour A4)	200/300 dpi: 110 ipm Simplex/ 180 ipm Duplex
Scan Area	297 mm – 432 mm
Compression Method	B&W TIFF: MH, MR, MMR, JBIG2 Colour: JPEG
Supported File Formats	Single/Multi-Page TIFF, PDF, High Compression PDF & PDF/A, Single-Page JPEG
Scan Modes	Scan-to-Email (with LDAP support) Scan-to-Folder (SMB/FTP) Scan-to-URL Scan-to-Media (USB/SD Card) Network TWAIN Scanning

Facsimile Specifications (Optional)

Type	ITU-T (CCITT) G3
Circuit	PSTN, PBX
Resolution	200 x 100 dpi, 200 x 200 dpi, 400 x 400 dpi (with optional SAF memory)
Modem Speed	33.6K – 2,400 bps w/Auto Fallback
Compression Method	MH, MR, MMR, JBIG
Transmission Speed	G3: Approximately 2 seconds/page (JBIG)
Scanning Speed	Up to 81 spm
Auto Dialing	2,000 Quick/Speed Dial numbers; 100 Group Dial numbers
Memory Capacity (SAF)	Standard: 4 MB (approx. 320 pages), Optional: 64 MB (approx. 4,800 pages) with optional SAF memory

Security Features (Standard)

DataOverwriteSecurity System (DOSS), HDD Encryption, User Codes, SNMP v3 Support, Encryption, Locked Print, User Authentication, 802.1x Wired Authentication, Quota Setting/Account Limit, Digitally Signed PDF, and more

RICOH MP C4504/MP C6004

SYSTEM SPECIFICATIONS



Hardware Accessories

Paper Handling Options

Two-Tray Paper Bank (PB3160)¹

Tray Capacity	1,100 sheets (550 sheets x 2 trays)
Paper Size	A5 – SRA3
Paper Weight	52 – 300 g/m ²
Dimensions (WxDxH)	587 x 685 x 247 mm

One-Tray Paper Bank (PB3150)¹

Tray Capacity	550 sheets x 1 tray
Paper Size	A5 – SRA3
Paper Weight	52 – 300 g/m ²
Dimensions (WxDxH)	587 x 685 x 247 mm

Requires installation of Caster Table Type M3

Tandem Large Capacity Tray (PB3230)¹

Tray Capacity	2,000 sheets (1,000 sheets x 2)
Paper Size	A4
Paper Weight	52 – 300 g/m ²
Dimensions (WxDxH)	587 x 685 x 247 mm

Side Large Capacity Tray (RT3030)

Tray Capacity	1,500 sheets
Paper Size	A4
Paper Weight	52 – 300 g/m ²
Dimensions (WxDxH)	340 x 545 x 290 mm

Requires installation of Two-Tray Paper Bank (PB3160) or Tandem LCT (PB3230)

Output Trays & Finisher Options

Internal Shift-Sort Tray (SH3070)¹

Tray Capacity	250 sheets (A4 or smaller) 125 sheets (B4 or larger)
Paper Size	A5 – SRA3
Paper Weight	52 – 300 g/m ²

Cannot be installed with any Finisher

One-Bin Tray (BN3110)

Paper Size	A5 – SRA3
Paper Weight	52 – 300 g/m ²
Tray Capacity	125 sheets

500-Sheet Internal Finisher (SR3130)¹

Paper Size	A6 – SRA3
Paper Weight	52 – 300 g/m ²

Stack Capacity	500 sheets (A4 or smaller) 250 sheets (B4 or larger)
Staple Paper Size	A4 – A3
Staple Paper Weight	52 – 105 g/m ²
Staple Capacity	50 sheets (A4) 30 sheets (B4 – A3, and/or Mixed Sizes)

Staple Positions	Top, Bottom, 2 Staples
Dimensions (WxDxH)	546 x 523 x 170 mm

¹Not available for MP C6004.

2-/4-Hole Punch Unit (PU3040EU)

(Optional; Installs inside SR3130 Internal Finisher)

Punch Paper Sizes	A4 – A3
Punch Paper Weight	52 – 169 g/m ²

1,000-Sheet Hybrid Staple + Stapleless Finisher (SR3210)^{1,2,3,4}

Paper Size	Proof Tray: A6 – SRA3 Shift Tray: A6 – SRA3
------------	--

Paper Weight	Proof Tray: 52 – 169 g/m ² Shift Tray: 52 – 300 g/m ²
--------------	--

Stack Capacity	Proof Tray: 250 sheets (A4 or smaller); 50 sheets (B4 or larger) Shift Tray: 1,000 sheets (A4 or smaller); 500 sheets (B4 or larger)
----------------	---

Stapleless Capacity	2 – 5 sheets/set
Staple Capacity	50 sheets (A4 or smaller) 30 sheets (B4 or larger)

Staple Paper Size	A4 – A3
Staple Paper Weight	52 – 105 g/m ²
Staple Positions	Top, Bottom, 2 Staples
Dimensions (WxDxH)	563 x 620 x 960 mm

1,000-Sheet Booklet Finisher (SR3220)^{1,2,3,4}

Paper Size	Proof Tray: A6 – SRA3 Shift Tray: A6 – SRA3
------------	--

Paper Weight	Proof Tray: 52 – 169 g/m ² Shift Tray: 52 – 300 g/m ²
--------------	--

Stack Capacity	Proof Tray: 250 sheets (A4 or smaller); 50 sheets (B4 or larger) Shift Tray: 1,000 sheets (A4 or smaller); 500 sheets (B4 or larger)
----------------	---

Staple Capacity	Normal Staple: 50 sheets (A4 or smaller); 30 sheets (B4 or larger)
-----------------	--

Saddle Stitch	15 sheets
Staple Paper Size	Normal Staple: A4 – A3 Saddle Stitch: A4 – A3

Staple Paper Weight	52 – 105 g/m ²
Staple Positions	Top, Bottom, 2 Staples, Booklet
Dimensions (WxDxH)	563 x 620 x 960 mm

2-/4-Hole Punch Unit (PU3050EU)

(Optional; Installs inside SR3210 or SR3220 Finisher)

Punch Paper Sizes	A4 – A3
Punch Paper Weight	52 – 256 g/m ²

2,000-Sheet Booklet Finisher (SR3240)^{1,2,3,4}

Paper Size	Proof Tray: A6 – SRA3 Shift Tray: A6 – SRA3
------------	--

Paper Weight	Proof Tray: 52 – 220 g/m ² Shift Tray: 52 – 300 g/m ²
--------------	--

Stack Capacity	Proof Tray: 250 sheets (A4 or smaller) 50 sheets (B4 or larger) Shift Tray: 2,000 sheets (A4) 1,000 sheets (A4 – SRA3)
----------------	---

Staple Capacity	Normal Staple: 50 sheets (A4 – A3 and Mixed Sizes) Saddle Stitch: 20 sheets (80 g/m ²)
-----------------	---

Staple Paper Size	Normal Staple: A4 – A3 Saddle Stitch: B5 – SRA3
-------------------	--

Staple Paper Weight	Normal: 52-105 g/m ² , Saddle: 64-105 g/m ²
Staple Positions	Top, Bottom, 2 Staples, Top Slant, Booklet
Dimensions (WxDxH)	657 x 613 x 960 mm

3,000-Sheet Finisher (SR3230)^{1,2,3,4}

Paper Size	Proof Tray: A6 – SRA3 Shift Tray: A6 – SRA3
------------	--

Paper Weight	Proof Tray: 52 – 220 g/m ² Shift Tray: 52 – 300 g/m ²
--------------	--

Stack Capacity	Proof Tray: 250 sheets (A4 or smaller) 50 sheets (B4 or larger) Shift Tray: 3,000 sheets (A4) 1,500 sheets (B5 – SRA3)
----------------	---

Staple Capacity	50 sheets (A4 – A3, Mixed Sizes)
-----------------	----------------------------------

Staple Paper Size	B5 – A3
Staple Paper Weight	52 – 105 g/m ²
Staple Positions	Top, Bottom, 2 Staples, Top Slant
Dimensions (WxDxH)	657 x 613 x 960 mm

2-/4-Hole Punch Unit (PU3060EU)

(Optional; Installs inside SR3230 or SR3240 Finishers)

Punch Paper Sizes	B5 – A3
Punch Paper Weight	52 – 256 g/m ²

Colour Controller E-23C

Controller Type	Embedded Type
Fiery Platform	FS150
CPU	Intel Processor G850 2.9GHz
Host Interface	1000Base-T/100Base-TX/10Base-T
Memory	2 GB
Internal HDD	500 GB
Operating System	Linux
Network Protocol	TCP/IP (IPv4/IPv6), SMB, Bonjour
Printer Description	Standard: PostScript 3 & PCL6/5c Language
Max Print Resolution	Up to 1200 dpi (2 bit)
Max Scan Resolution	Up to 600 dpi
Fonts	PS3: 138 fonts/PCL: 81 AGFA fonts Standard: Command WorkStation [®] 5, Fiery [®] Scan, Printer Delete Utility, Fiery Web Tools, Fiery Bridge, Secure Erase and Fiery VUE
Utilities	Optional: Fiery Impose, Fiery Compose, Fiery Auto Trap, EFI Spot-On [™] , Fiery Hot Folders, Fiery Colour Profiler Suite v4.0, Fiery ES-2000 Spectrophotometer

Colour Management Tools	ICC Profile, Colour Chart, CMYK Colour Reference Pages, RGB Colour Tests, Trapping Support and ColorWise [®] Pro Tools
-------------------------	---

Additional Accessories

Banner Paper Guide Tray Type M19, Caster Table Type M3, Bridge Unit BU3070, Cabinet, Camera Direct Print Card Type M19, Extended USB Board Type M19, Fax Connection Unit Type M20, Fax Memory Unit Type M19 64MB, File Format Converter Type M19, G3 Interface Unit Type M20, IEEE 802.11a/g/n Interface Unit Type M19, IEEE 1284 Interface Board Type M19, Imageable Area Extension Unit Type M19, Memory Unit Type M19 4GB, NFC Card Reader Type M19, OCR Unit Type M13, Optional Counter Interface Unit Type M12, Postscript3 Unit Type M19, Smart Card Reader Cover Unit Type M19, USB Device Server Option Type M19, XPS Direct Print Option Type M19

¹Either the Cabinet or one of the paper options must be installed.

²Requires configuration with Bridge Unit BU3070.

³Cannot be installed together.

⁴Requires installation of Two-Tray Paper Bank (PB3160) or Tandem Large Capacity Tray (PB3230).

Some options may not be available at the time of market release.

Specifications are subject to change without notice.

For maximum performance and yield, we recommend using genuine Ricoh parts and supplies.

RICOH
imagine. change.

www.ricoh.com.au

Ricoh Australia Pty. Ltd. Suite G2, 2 Richardson Place, North Ryde, NSW, 2113. Phone: 13 RICOH (13 74264) Fax: (02) 9249 6244 Web: ricoh.com.au
Ricoh New Zealand Pty. 60 Stanley Street, Parnell, Auckland New Zealand. Phone: 0800 2 Ricoh (0800 2 74264) Fax: 09 915 1401 Web: ricoh.co.nz